

INTRODUCING: CLOVER FLEX





INTRODUCTION

If you're running a business, chances are you've got a lot going on. You have customers to service, employees to manage, inventory to track — and any number of other business activities calling for your attention.

So of course, efficiency is a top priority. That's why you need a point-of-sale system that's as dynamic as your business. A device that lets you be just as comfortable busting lines or going offsite as you are standing at the counter. A device that lets you be a bit more...flexible.

Meet Clover Flex, the full-featured device that takes care of all your payment and POS needs. Although it shines at the counter, the Clover Flex is designed to give you ultimate flexibility anywhere you are. And with all the latest technologies embedded in a single portable device, you'll free your hands, your mind and your countertop for the things that really matter.



BENEFITS

Check out a quick list of benefits you get from the super-portable Clover Flex:

- ✓ The same **fast, secure, and reliable payments** that you get with your Clover Mini or Clover Mobile, only in a smaller device.
- ✓ True **convenience** with the durability, functionality & design of larger Clover devices.
- ✓ Total control to **monitor your business from anywhere** with the cloud-based Clover Dashboard.
- ✓ **Proprietary security.** You and your customers can rest easy knowing every transaction is encrypted & protected with Clover Security.
- ✓ Help from a **friendly, 24/7 call center.**

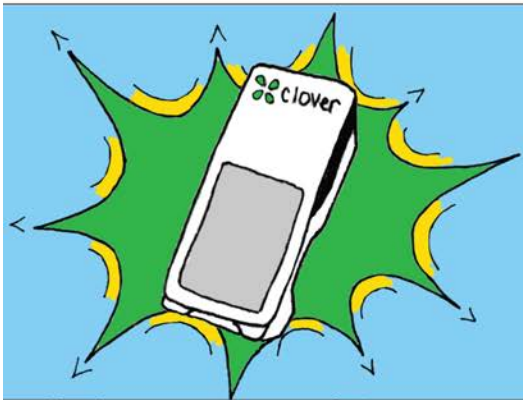
Let's see how Clover Flex gives you super-powers to tackle real, tricky scenarios merchants like you face every day.



First up, at the register.



ENTER CLOVER FLEX! THIS FULL-FEATURED DEVICE MEETS ALL YOUR PAYMENT AND POS NEEDS - AND FITS IN TIGHT SPOTS.



CLOVER FLEX GIVES MERCHANTS SUPER POWERS TO GET EVERY JOB DONE WELL - AND SAVES COUNTER SPACE, TOO.



Clover Flex charge will hold its charge for a full day of business, based on the typical usage of a small business.

Surely the reason countertops were made so wide and accommodating in the first place wasn't to hold your bulky register, receipt printer, PIN entry device and wires. If you found an effective way to help your countertops go on a permanent diet, wouldn't you want to do it?

Clover Flex has a **built-in receipt printer and barcode scanner**, clearing the clutter on your countertops. And as for those tangled wires? Clover Flex takes a **long-lasting charge** that'll power you through a full day of business. Translation: no need to keep it plugged in. It **stores receipts electronically**, too – which means no more storing paper receipts to fight chargebacks later.

Designed to sit comfortably next to your POS/register or as a **super-portable handheld**, Clover Flex allows merchants to take orders, manage inventory, and accept all forms of payments both at the counter and on the sales floor.





Next up, line busting.



ENTER CLOVER FLEX! THIS FULL-FEATURED, MOBILE-OPTIMIZED DEVICE HANDLES ALL YOUR PAYMENT AND POS NEEDS ANYWHERE.



CLOVER FLEX GIVES MERCHANTS SUPER POWERS TO SPEED UP PAYMENT AND MAKE THAT LINE VANISH.



Clover Flex charge will hold its charge for a full day of business, based on the typical usage of a small business.

Some people see a huge line going into (or coming out of) a store as a problem. Not us. We see it as a badge of honor — and a sign that you must be doing something right. After all, customers won't waste their time standing around in lines for products or services that are subpar. So, even though long lines are a good problem to have, you still need to figure out the best way to keep that line moving.

Because it lets you **accept all payment types, including EMV smartcards and mobile payments**, like Apple Pay, and eSignature capture, Clover Flex helps turn those long lines into happy customers in no time. Speed things up by taking orders from customers while they're waiting on line. They can pick up their orders at the counter and zoom into the rest of their day.

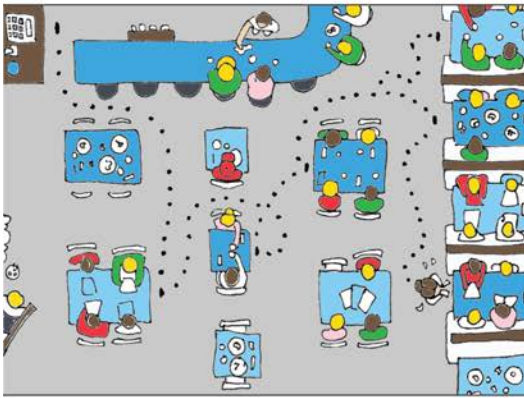
And because its **long-lasting charge** powers you through a full day of business, you won't find yourself having to run back to the counter to plug in. You can engage with your customers in line for as long as you need to be there.

The fact that you're able to be **proactive with your customers** while they're in line will surely help you win bonus points as being a merchant that truly cares about your in-store experience — with service that begins sometimes even before customers get in the store!

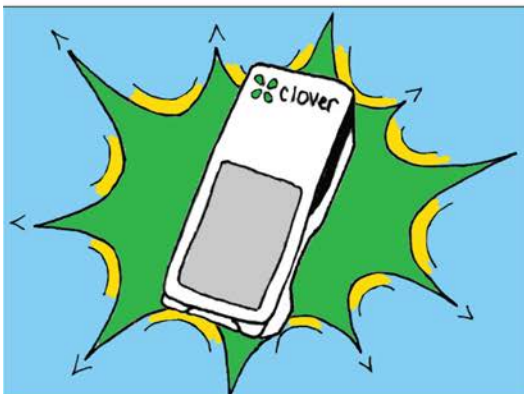




WOULDN'T IT BE GREAT IF YOUR STAFF COULD ACCEPT PAYMENTS TABLE-SIDE, WHERE THE CUSTOMERS ARE - INSTEAD OF ALWAYS RUNNING BACK AND FORTH?



ENTER CLOVER FLEX! THIS HANDY POS DEVICE FLEXES TO BRING PAYMENTS RIGHT TO THE CUSTOMER.



TAKE PAYMENT DIRECTLY TO THE CUSTOMER: TABLESIDE, IN THE AISLE, IN A SALON CHAIR, OR ANYWHERE ELSE. CLOVER FLEX GIVES MERCHANTS SUPER POWERS TO GET EVERY JOB DONE WELL.



Alright, have a seat. It's time to talk table-side.

When you're running a business, efficiency is everything. For a restaurant, reducing the number of trips waitstaff has to make back and forth will result in faster dining times and happier customers. At a salon, letting customers complete their transaction before getting out of the chair helps them save time on checkout – plus, nothing says “pampered” like an ultra-convenient customer service experience. Imagine accepting all forms of payments on the spot at a sidewalk shoe sale, or taking payments smoothly at a rooftop bar over drinks.

With Clover Flex, it's never been easier to **bring payment directly to your customers** – no matter what business you're in.

With its **built-in receipt printer and barcode scanner, e-Signature capture** and the ability to **accept all payment types, including tips**, you're empowered to service your customers better – right where they are. Clover Flex also features **seamless integration with other Clover POS devices**, ensuring a consistent customer service experience no matter which device you're using.

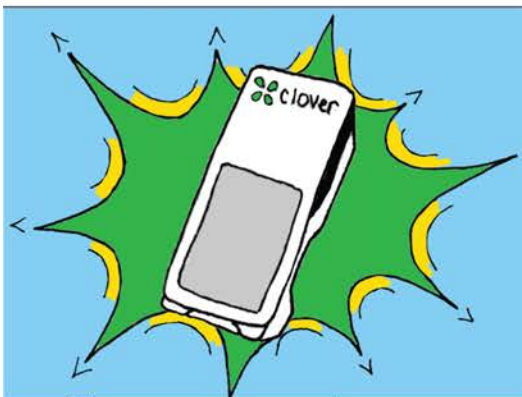




BUSINESS HAPPENS EVERYWHERE NOWADAYS. CAN YOUR POS AND PAYMENT DEVICES KEEP UP? LET'S SEE HOW ONE FOOD TRUCK HANDLES STREET-SIDE PAYMENT LIKE A SUPER-HERO.



ENTER CLOVER FLEX! THIS FULL-FEATURED POS DEVICE BRINGS PAYMENT ANYWHERE YOUR BUSINESS TAKES YOU.



ACCEPT PAYMENTS WHEREVER THE CUSTOMERS ARE: AT HOME, ON THE SIDEWALK, IN THE STREET, AND EVERYWHERE ELSE. CLOVER FLEX GIVES MERCHANTS SUPER POWERS TO GET EVERY JOB DONE.



Clover Flex charge will hold its charge for a full day of business, based on the typical usage of a small business.

Let's go! See how Clover Flex works for offsite sales.

For customers, convenience is king. Gone are the days where customers had to come to you to purchase goods or services. It's a mobile-first, go anywhere world now. Realizing business happens everywhere nowadays, it's imperative your POS and payment devices can meet customers wherever they are, even off-site.

Clover Flex can help merchants of all types **accept payment smoothly off-site**: from plumbers doing house calls, to traveling salesmen, home health aides, food delivery and more. Imagine a restaurant with a fixed location launching a traveling food truck to increase their presence in the community. Or consider a toy store doing a sidewalk sale. Or even a local bakery selling goods at a church bazaar. Wherever your customers are, Clover Flex can help you bring a full-featured POS and convenient payment directly to them.

Clover Flex **works on both Wi-Fi and 3G networks and even works offline**, so you can provide excellent customer service by completing the transaction at all times. Its **long-lasting charge** powers you through a full day of business, so no worries about keeping it plugged in. Plus Clover Flex is **seamlessly integrated with your other Clover POS devices** – so all sales flow to a centralized, cloud-based hub you can monitor easily from anywhere.

For such a small, portable device, Clover Flex is constantly finding ways to come up big for you and your business, whether at the register, busting lines, going tableside or working off-site.



To learn more about Clover Flex, visit:
clover.com or call **(855) 853-8340**

For more helpful tips on how
to do business better, visit:
blog.clover.com
